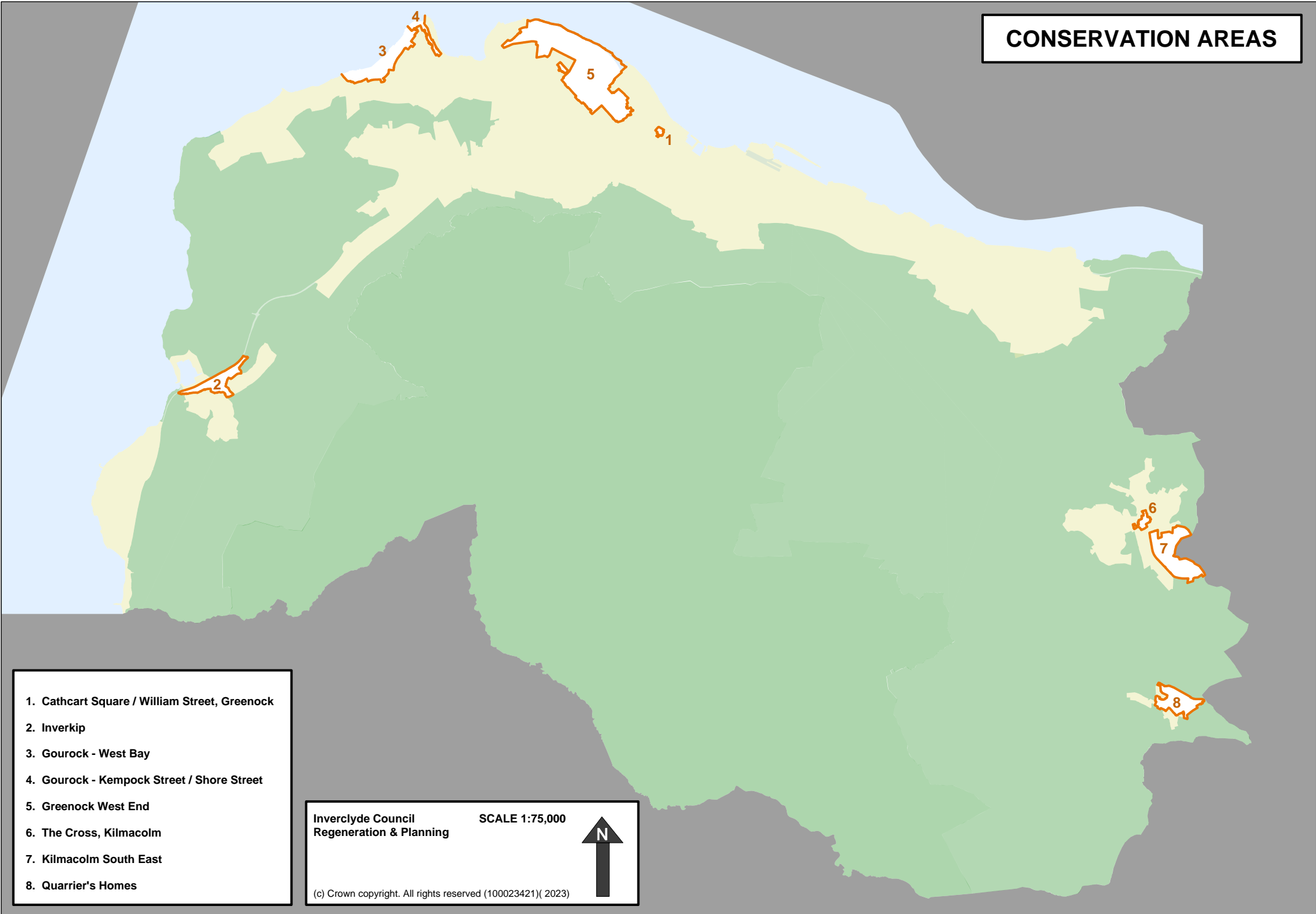
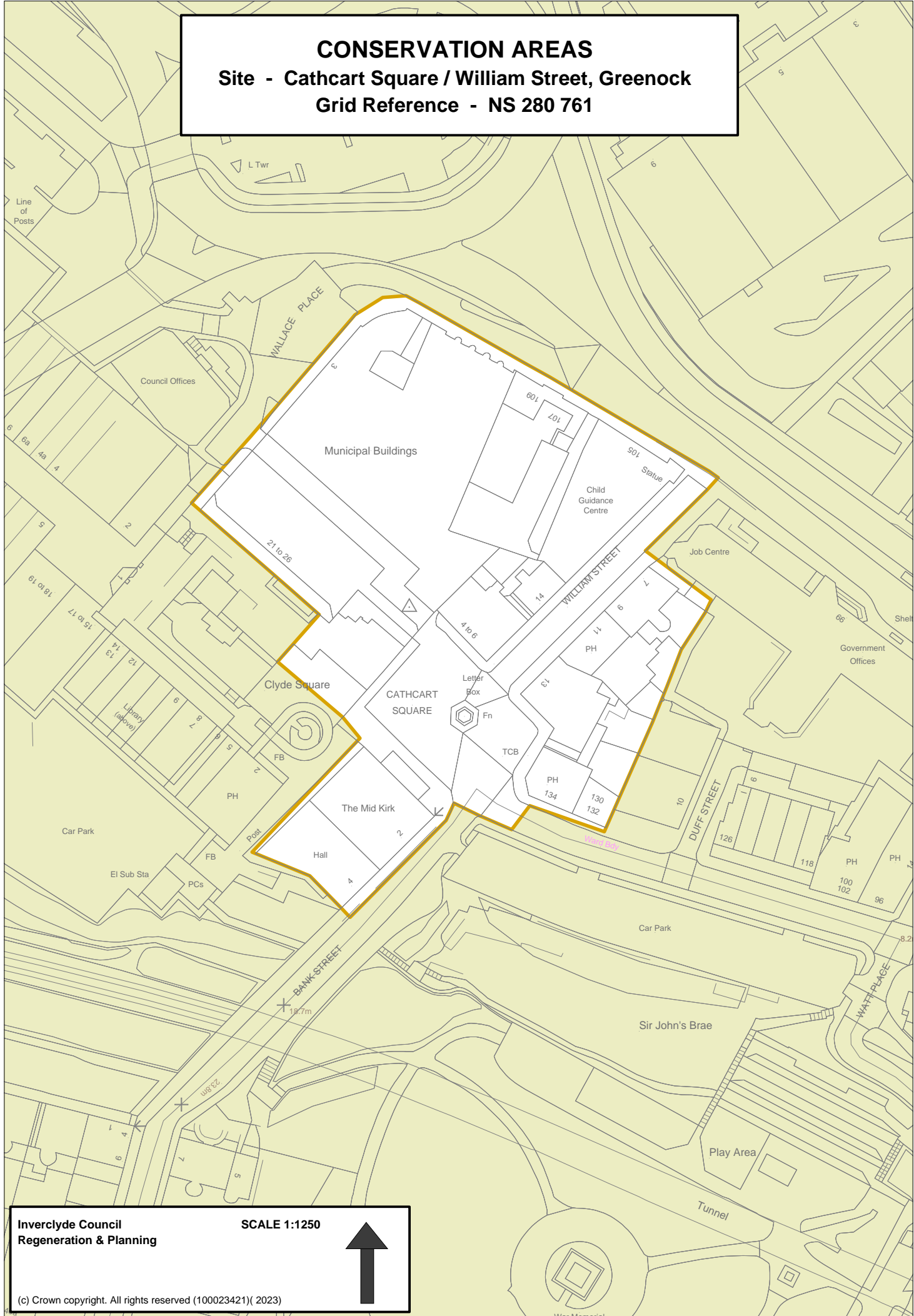


# CONSERVATION AREAS



**CONSERVATION AREAS**  
**Site - Cathcart Square / William Street, Greenock**  
**Grid Reference - NS 280 761**

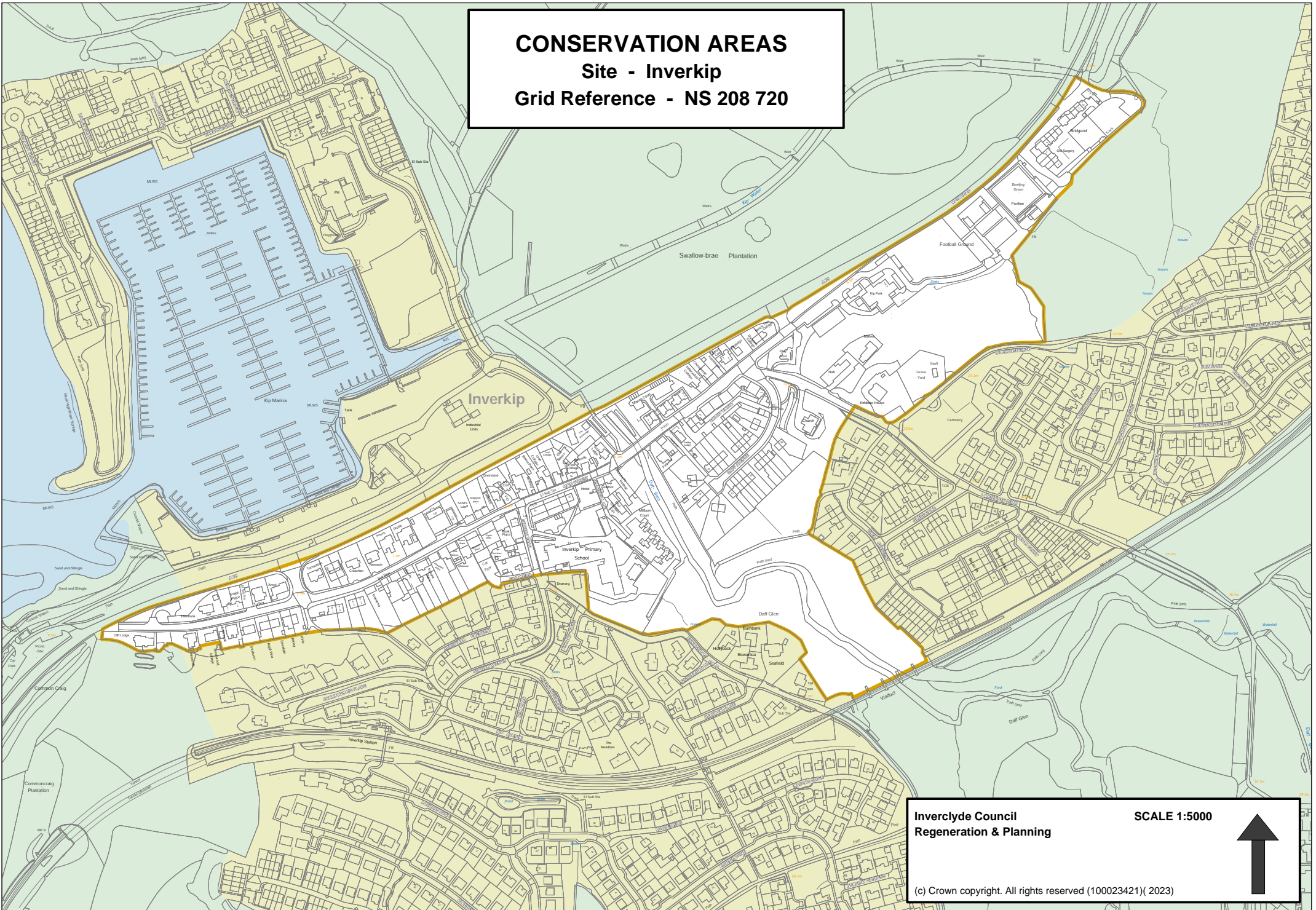


**Inverclyde Council**  
**Regeneration & Planning**

**SCALE 1:1250**



**CONSERVATION AREAS**  
**Site - Inverkip**  
**Grid Reference - NS 208 720**



**Inverclyde Council**  
**Regeneration & Planning**

**SCALE 1:5000**



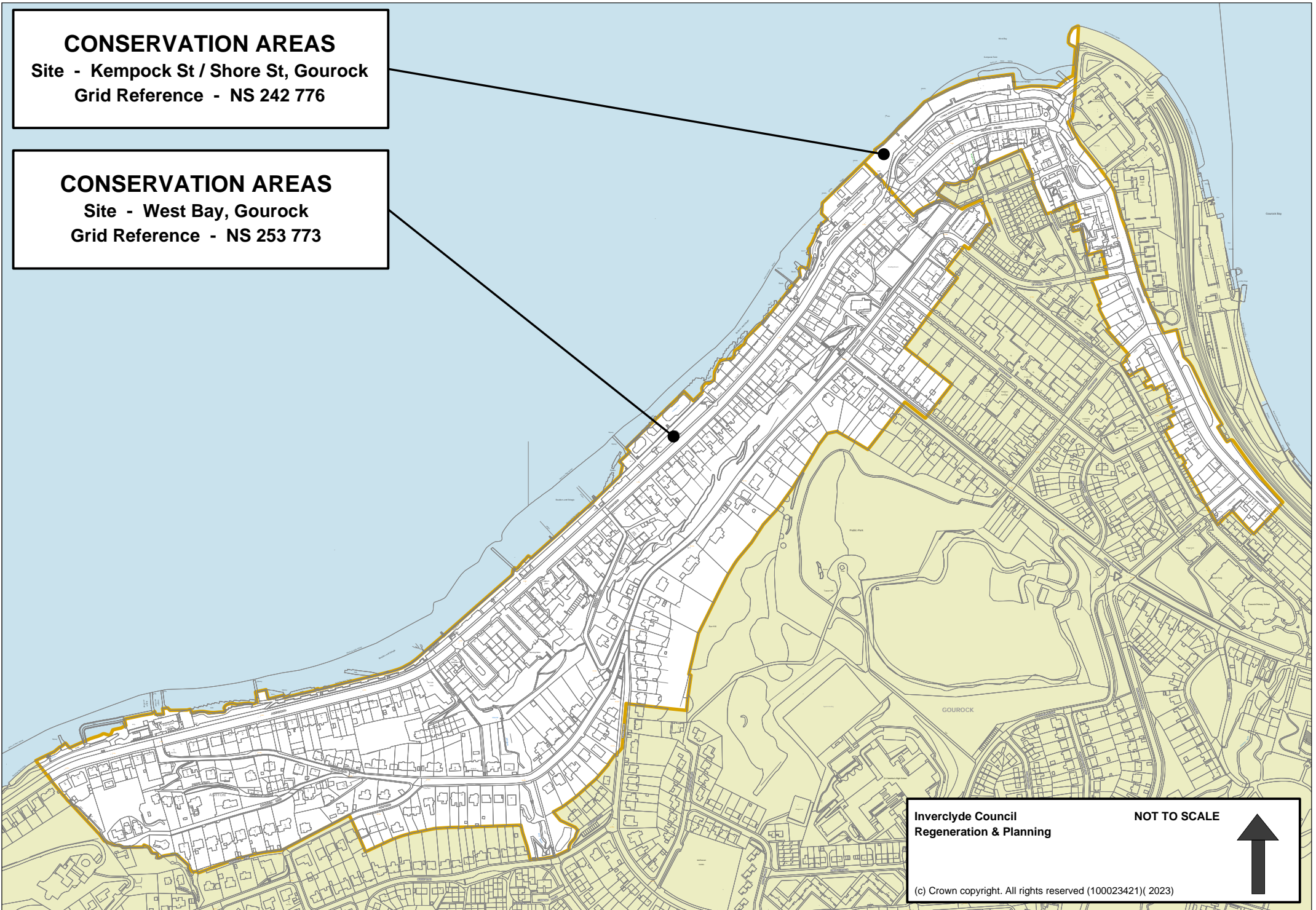
(c) Crown copyright. All rights reserved (100023421)( 2023)

**CONSERVATION AREAS**

Site - Kempock St / Shore St, Gourock  
Grid Reference - NS 242 776

**CONSERVATION AREAS**

Site - West Bay, Gourock  
Grid Reference - NS 253 773



Inverclyde Council  
Regeneration & Planning

NOT TO SCALE

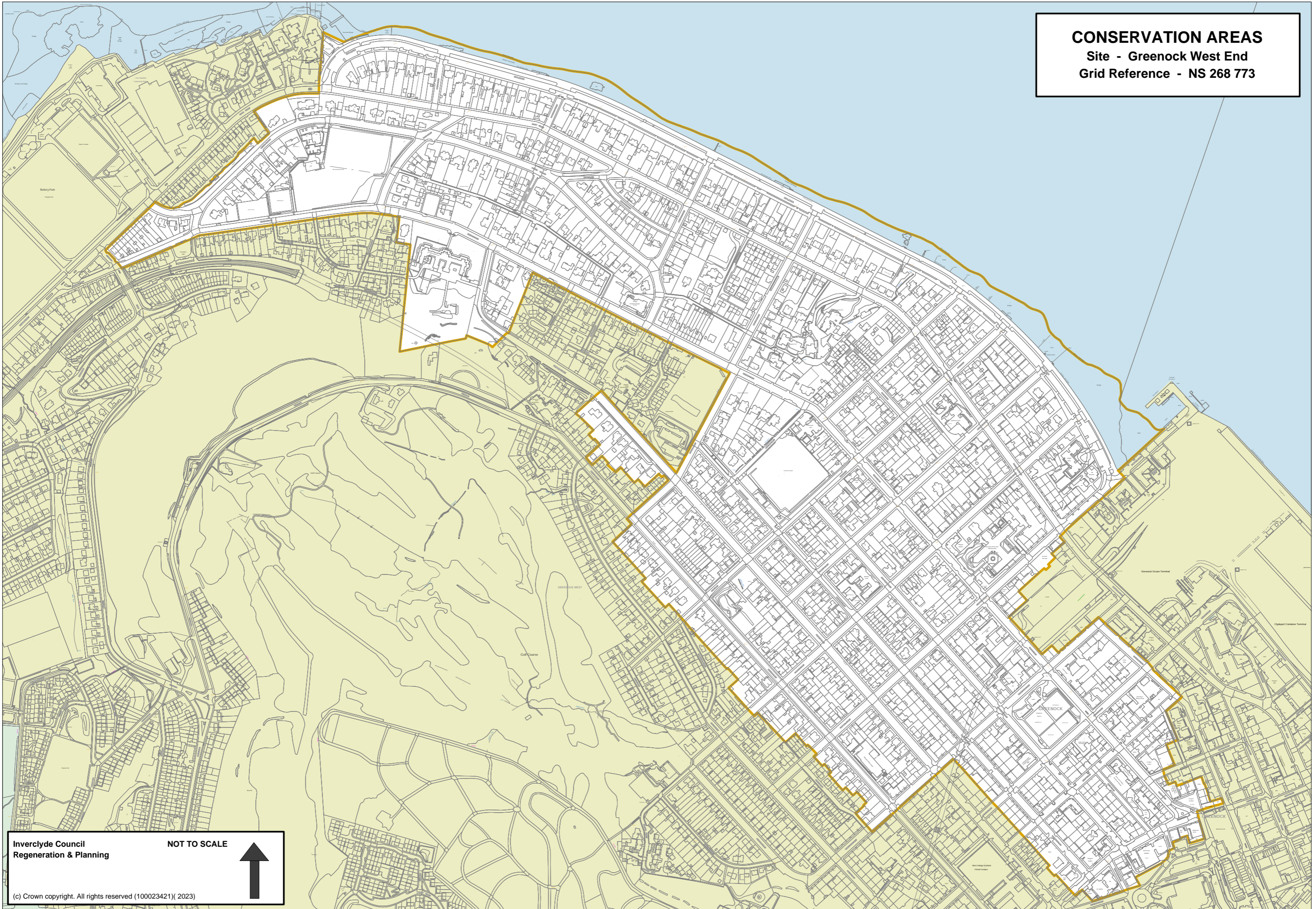


(c) Crown copyright. All rights reserved (100023421)( 2023)

**CONSERVATION AREAS**

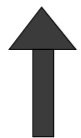
Site - Greenock West End

Grid Reference - NS 268 773



Inverclyde Council  
Regeneration & Planning

NOT TO SCALE



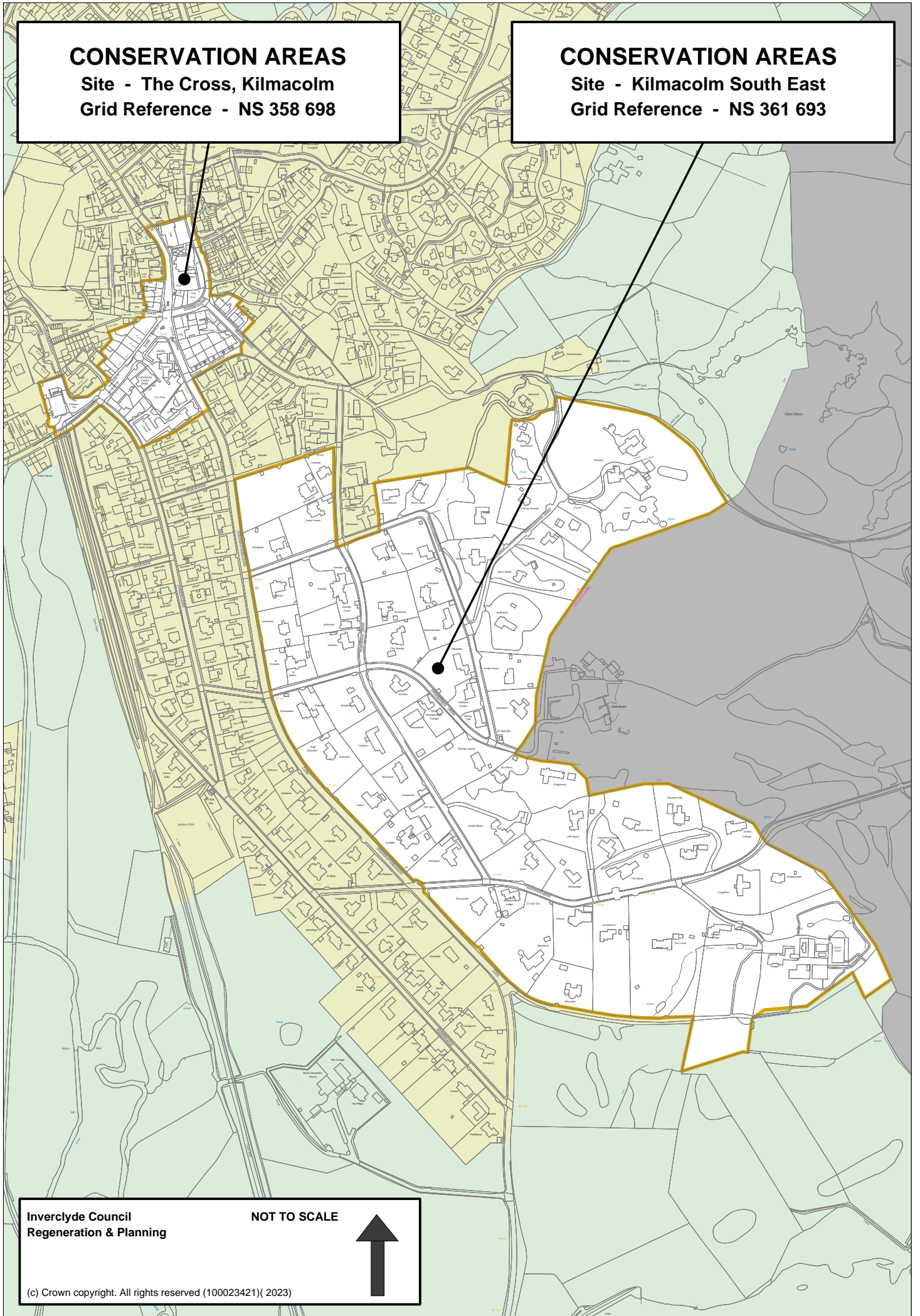
(c) Crown copyright. All rights reserved (100023421)( 2023)

### CONSERVATION AREAS

Site - The Cross, Kilmacolm  
Grid Reference - NS 358 698

### CONSERVATION AREAS

Site - Kilmacolm South East  
Grid Reference - NS 361 693



Inverclyde Council  
Regeneration & Planning

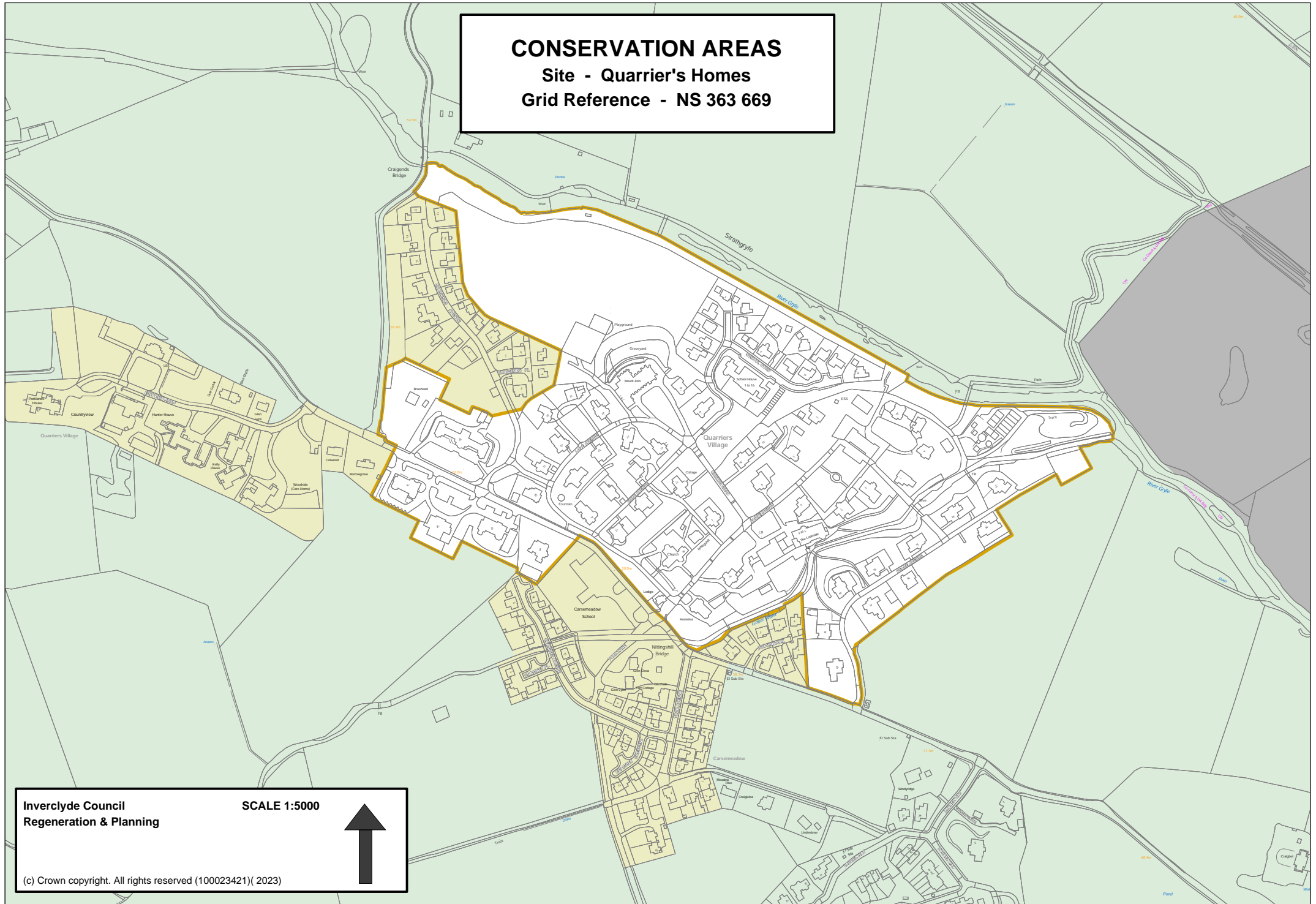
NOT TO SCALE



# CONSERVATION AREAS

Site - Quarrier's Homes

Grid Reference - NS 363 669



Inverclyde Council  
Regeneration & Planning

SCALE 1:5000



(c) Crown copyright. All rights reserved (100023421)( 2023)