



80% of adult social care services are graded good or better.



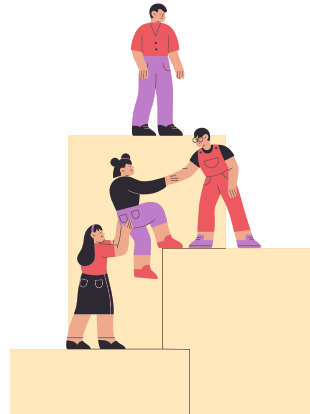
80% of adults supported at home agreed that this care has helped maintain or improve their quality of life.

32% of looked after children had a permanence plan within 6 months of being accommodated.

Safeguarding Vulnerable Residents 2022/23



41% of homelessness cases progressed to a full homelessness assessment.



Over 200 people engaged with the “I Promise” team about what services for young people are working well and what could be improved.